

In this issue:

Community Leaders	2
Important Dates & Deadlines	2
4-H Council	3
4-H Junior Leaders	3
SE Livestock Contest	4
4-H Youth Challenge Day	5
Food Preservation Lab Classes	6
Hoof & Nail Care	7
Barn to Ring Day Camp	7
Foodstand Clean Up	8
Cowley County Fair	9
Fair Flow Chart	10
Foodstand/Barn 4 Schedules	11
King/Queen Contest	12
Animal Costume Contest	13
Superintendent Search	14
Destination Cards	14
Market Sale	15
Kansas State Fair	16
State Livestock Dates	17
Club News	18
Sportfishing Slam	19
Grand House Drawings	20
Livestock Production Essay	21
Fair Resources/ Ambassadors	22
4-H Foster Kids Grant	23
Misc.	24
Enrollment & Scholarships	25
About Us	26

*A letter from Sarah,***June 2025**

Summer is here and we are so excited!!

Be sure to see all the scheduled events throughout the summer and Summer Intern activities! The fair will be here before you know it and we want you to get the most out of 4-H!

Mark your calendars for JUNE 20, 2025! There will be a **Family Fair Training** night you will not want to miss. Information booths will open at 5:00 PM. During this time will be project booths. These will be set to answer questions you may have or review your projects if you bring them, giving you tips/tricks or ideas. There will also be a booth available for youth in ANY project to get the opportunity to practice speaking with a "judge". Please only bring static projects to be evaluated, no animals. At 6PM we will start a fair entry walk through, discuss livestock destination cards, sale review, and fair expectations as well as hearing from a Fairboard representative of fair and camping rules.

**ATTN FAIR CAMPERS!**

Mark your calendars! You will be able to access the fairgrounds to claim/rope off your camp site on **Tuesday, July 22nd.**

Cowley County Fair

WELCOME TO THE JUNGLE

July 31- August 5, 2025

Contact us:

cl@listserv.ksu.edu 620-221-5450

More contact info on the back page.



Community Leaders

June Check-Up

- * **PLEASE download a club roster in 4honline and verify everyone in your club is enrolled.**
- * **On the downloaded roster, there is a 2nd page showing projects enrolled in. PLEASE make sure the 4-Hers are enrolled in the project they intend to participate in at the Fair.**

Review

- * Read the *4-H Newsletter* and mark important dates on the calendar. (Have you noticed all the links provided?)
- * Review highlights from the *4-H Newsletter* at your club meeting.

To-Do

- * Recruit a Shift Manager and organize volunteers for your club's scheduled time to

work in the 4-H Foodstand. (turn in to Extension Office by July 24)

- * Recruit volunteers to cover the club's shift to be Barn 4 Supervisors. (turn in to Extension Office by July 24)
- * Check club mailbox at Extension Office

Promote/Recruit

- * Fair Pre-Entry DEADLINE!! July 2nd
- * Family Fair Training- June 20
- * Hoof & Nail Clinic - June 21
- * Barn to Ring Camp - June 28
- * [4-H Media Team](#)

Remember

- * Club t-shirts REQUIRE approval, the form to do so is on our [website](#) under 4-H Youth Development, forms, Cowley County 4-H Apparel Approval Form

Important Dates and Deadlines *underlined text is a link

June

- 6/3- SE Area Livestock Day
- 6/4-6 [Discovery Days](#)
- 6/5 Cowley Co. Extension Board Mtg; 5:30pm
- 6/12 Emporia, SE Area Challenge Day
- 6/13-15 [Geology Field Trip](#)
- 6/15 KSF/KJLS Sheep, Swine & Goat [Nominations](#) Due
- 6/20 **Fair Family Training**
- 6/21 [Hoof & Nail Care](#)
- 6/27-28 [Insect Spectacular](#)
- 6/28 [Barn to Ring Day Camp](#)
- Starting in June, [Rock Spring Camp](#) ([scholarships available](#))

July

- **7/2 ENROLLMENT ENTRY DEADLINE** to show at the Cowley Co. Fair (must have an approved/paid enrollment status by 7/2)
- 7/2 ENROLL; ADD/DROP Projects **deadline**
- 7/8 Foodstand Clean-Up 3:30pm
- **7/15 KSF Livestock Entries Due**
- 7/24 Watermelon Feed! At the 4-H Council mtg

- 7/24 Fair Superintendent Meeting
- 7/31-8/4 Cowley County Fair

August

- **8/1 KJLS entries due**
- 8/7 [Wheat Expo](#)
- 8/15 Kansas State Fair non-livestock pre-entries due to Extension Office
- 8/15 KJLS Entry Deadline
- 8/16 4-H [Horticulture Judging Contest](#)
- 8/23-24 [State 4-H Livestock Sweepstakes](#)

September

- 9/5-14 [Kansas State Fair](#)
- 9/5-7 Kansas State Fair Grand Drive

October

- 10/1 New 4-H Year begins
- 10/3-5 [Kansas Junior Livestock Show](#)

[Cowley County Annual 4-H Calendar](#)

[Kansas 4-H Events & Activities Calendar](#)

4-H Council & Junior Leaders

4-H Council - July 24, 2025 - 6:00 p.m.

Fairgrounds, Winfield

If you were selected to represent your club at 4-H Council and find you cannot attend, please let your leader(s) know in advance and find another member to serve in your place.

Junior Leaders

4-H Junior Leaders invites any youth ages 12 and older (and their families) to help us on these various leadership events. Contact Sarah LaGrone at the Extension Office to get more information and to sign-up to assist:

July 8 - 4-H Food Stand Clean-up

July 25 - 4-H Council Watermelon feed, Superintendent's meeting

August 3 - 4-H Sunday and Animal Costume Contest

The next monthly meeting for 4-H Junior Leaders will be to discuss 4-H Sunday details, date TBD.

Do you have a passion for 4-H Leadership?



Would you like to share your passion with 4-Hers 12 and older? Including fun activities and events! Cowley County 4-H is looking for an adult to be the sponsor/leader of **4-H Junior Leaders**. If you would like to learn more about the volunteer position, please contact Sarah at slag11@ksu.edu.



Where does it all fit in? Ever wonder how the 4-H county monies happen and where they go? We are looking for 2-4 high school aged 4-H members who would be interested in serving on the **4-H Council Budget Committee** to put together the financial budget plan for council. We meet once in October to put together the financial review report and then another time to create the written finance plan for council monies - called a "proposed budget". Your club council representatives vote on these two items annually for all county expenses and income plan. We need to meet and plan to present at the next council meeting. If interested, contact Debbi Waite, cowley4hshootingsports@gmail.com or leave message at 620-221-2217 and we will meet at the extension office at a convenient time for the members involved.

Upcoming Regional Event

Southeast Area LIVESTOCK CONTEST

June 3, 2025

The event will be held at the Allen County Fairgrounds at Riverside Park in Iola, KS, and is open to all 4-H members. Registration will take place at the Community Building, with a cost of \$10.00 per contestant due at check-in. A short break will be provided during the livestock judging contest between judging and reasons for snacks, water, and restroom breaks (NO LUNCH.) Results will be shortly following the conclusion of reasons. Pre-registration of numbers coming to the contest through local extension agents is encouraged to help us adequately plan for food needs. Teams and names can be decided on the day of the contest and submitted at check-in.



1 Livestock Judging

Registration from 8:30-9:30 AM

Contest starts at 10:00 AM

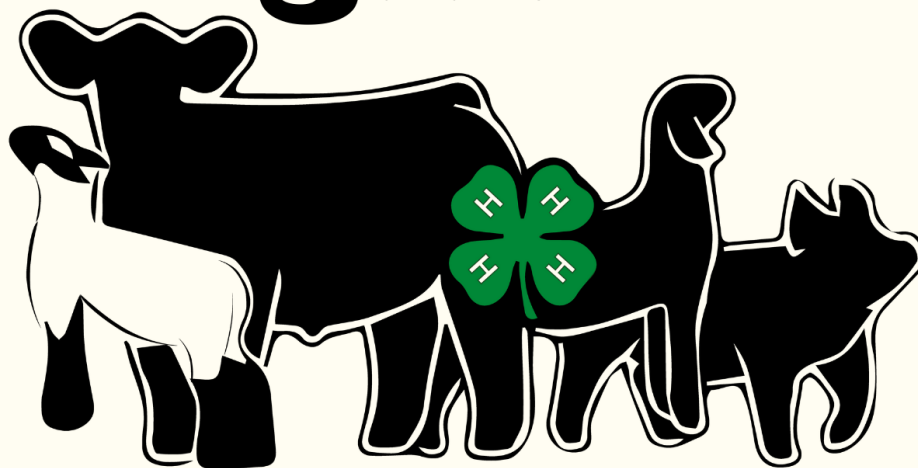
2 Meats Judging

Registration at 7:30 AM

Contest starts at 8:00 AM

3 Livestock Skillathon

8:00 AM- 10:00 AM - Come and participate at your leisure.



K-STATE
Research and Extension



Upcoming Regional Event



2025 Southeast Region 4-H Youth Challenge Day Thursday, June 12, Emporia Kansas – Registration: 9:30 a.m.

Judging Contests
Crops, Photography, Family & Consumer Science and Horticulture
(open to all ages 9-18 before Jan 1)

Location: Anderson Building on Lyon County Fairgrounds, behind the Lyon County Extension Office, located at 2632 W US Hwy 50, Emporia, KS 66801

9:30 a.m. Registration for Horticulture, Crops, FCS and Photo Contests

Favorite Foods Registration and set up. Participants are asked to check in at Favorite Foods table after they have registered at the main registration table before setting up. **Favorite Food participants must be registered and set up by 10:30 a.m.** Judging will begin at 10:30 a.m. Local offices will have information about pre-registering Favorite Food Participants.

10:00 a.m. Horticulture, Crops, FCS and Photo Contest Instructions

10:15 a.m. Horticulture, Crops, FCS and Photo Contest begins. Horticulture is a timed contest and must be completed first.

10:30 a.m. Favorite Foods Judging Begins

All morning contests completed by noon. Favorite Foods completed by 12:30 p.m. Lunch on your own.

1:15 p.m. Recognition for Horticulture, FCS, Crops, Photo and Favorite Foods

Divisions
Intermediate Division - Ages 9-13, (before Jan. 1)

Senior Division - Ages 14-18 (before Jan. 1)

FCS and Photo will offer a non-competitive/mini experience for 7-8 years old (free) There may be others too!

Favorite Foods Show
(for local SE Ext. Unit Winners)

For every contest a 4-Her participates in, their name will be entered into a drawing for a chance to win \$100.

COST: \$10.00 per person, judge as many contests as you would like, exact change is appreciated, checks accepted. \$10 includes, any judging contests, and favorite foods if youth qualified locally, awards for winners

For Questions, please contact:

Horticulture
Travis Carmichael: 620-341-3220, trcarmic@ksu.edu

Photography
Maddy Wallace: 316-321-9660, mgwallac@ksu.edu

Crops
Brian Rees: 620-341-3220, brees@ksu.edu
Jill Barnhardt: 620-364-5313, jbarnhardt@ksu.edu

FCS – Family and Consumer Science
Becky Reid: 620-221-5450 bkreid@ksu.edu
Cassidy Collins: cecollins@ksu.edu

Favorite Foods
Anne Pitts: 316-284-6930, aelpers@ksu.edu

K-STATE
Research and Extension



K-State Research and Extension is committed to providing equal opportunity for participation in all programs, services and activities. Program information may be available in languages other than English. Reasonable accommodations for persons with disabilities, including alternative means for communication (e.g., Braille, large print, audio tape, and American Sign Language) may be requested by contacting the event contact **Kelsey Nordyke** four weeks prior to the start of the event at 620-222-1311 or knordyke@ksu.edu. Requests received after this date will be honored when it is feasible to do so. Language access services, such as interpretation or translation of vital information will be provided free of charge to limited English proficient individuals upon request.

Kansas State University Agricultural Experiment Station and Cooperative Extension Service

K-State Research and Extension is an equal opportunity provider and employer.

Upcoming Cowley Co. Events

K-STATE
Research and Extension

Cowley County

**FOOD
PRESERVATION LAB** CLASSES

Drying Foods

Friday, June 20 - 12-1 p.m.

Cowley County Courthouse Extension Assembly Room

Making Jam

Friday, June 27 - 3 -6 p.m.

4-H Food Stand - Winfield Fairgrounds

Water Bath Canning

Tuesday, July 1 - 3 -6 p.m.

4-H Food Stand - Winfield Fairgrounds

Pressure Canning

Monday, July 7 - 4 -7 p.m.

4-H Food Stand - Winfield Fairgrounds

**These hands-on
sessions will help
you practice skills.
Enroll in one class
or the full series!**

Register at:

<https://bit.ly/CLFoodPres25>

**Each class requires a minimum
of 5 participants.**

**\$5 lab fee
payable at door**

K-State Research and Extension is committed to providing equal opportunity for participation in all programs, services and activities. Program information may be available in languages other than English. Language access requests and reasonable accommodations for persons with disabilities, including alternative means for communication (e.g., Braille, large print, audio tape, and American Sign Language), may be requested by contacting the event contact Becky Reid four weeks prior to the start of the event June 20, 2025 at 620-221-5450 or bkreid@ksu.edu. Requests received after this date will be honored when it is feasible to do so. Language access services, such as interpretation or translation of vital information will be provided free of charge to limited English proficient individuals upon request.

Upcoming Cowley Co. Events

**ATTENTION
PLEASE!**

ALL SPECIE *Omitting Swine HOOF AND NAIL CARE

June 21, 2025

8:00 a.m.

Winfield Fairgrounds

*Do you know how to maintain your
animals hoof or nail needs?*

Come learn and get your 4-H animals hooves or
nails trimmed, as well as goats horns rounded

*Beef will have a professional hoof trimmer and will
be \$20/head

Scales will be available and a great time to ask questions
and work on showmanship as well

Please RSVP

**REGISTER
HERE**

**REGISTER
HERE**



BARN TO RING DAY CAMP

JUNE 28, 2025

CATTLE AND HOGS
9:00 AM -12:30 PM

SHEEP AND GOATS
1:00 PM- 3:30 PM

LUNCH PROVIDED @ 12:30PM

KANSAS STATE UNIVERSITY IS COMMITTED TO MAKING ITS SERVICES, ACTIVITIES AND PROGRAMS ACCESSIBLE TO ALL PARTICIPANTS. IF YOU HAVE SPECIAL REQUIREMENTS DUE TO A PHYSICAL, VISION, OR HEARING DISABILITY, CONTACT SARAH LAGRONE, 620-221-5450. KANSAS STATE UNIVERSITY AGRICULTURAL EXPERIMENT STATION AND COOPERATIVE EXTENSION SERVICE K-STATE RESEARCH AND EXTENSION IS AN EQUAL OPPORTUNITY PROVIDER AND EMPLOYER.

ALL HANDS ON DECK!

The foodstand is the only fundraiser 4-H does. Please plan to help get it ready for business at the fair.

FOODSTAND CLEAN-UP

- **Tuesday, July 8**
- **3:30 PM**
- **Volunteers Needed**
- **Floor cleaning
professional coming
at 5PM**

We need to clean before the fair! Numerous items will need to be removed and cleaned. The food stand floor will be professionally cleaned, so we need two shifts of volunteers to move large items (3:30pm and 7:00pm to move items back in. If anyone has a power washer, please contact the Extension Office. 620-221-5450.



Cowley County Fair; July 31 - Aug 4

4-H Official Fair Rule Books will be mailed to families by early-June.
Pre-Entries will be online and accepted from mid-June through July 2nd.

LAST DAY TO SUBMIT PRE-ENTRIES IS JULY 2nd.

Fair Entries can **NOT** be added at fair, but can be deleted. Late entries are accepted until 5:00 pm on Monday, July 7th with a \$30 fee per participant.

All 4-H pre-entries are due **Wednesday, July 2** using the online system we've used in the past. All families will be mailed a letter with pre-entry reminders, and the link for the online entries along with the official fair rule book that will be mailed out early-June.

Fair Superintendents

Will meet at the fairgrounds on July 24 at 7:00 p.m.

Help Us Improve the Fair

What can we do to improve the Cowley County Fair? This is the procedure you should follow:

1. Fair suggestions must be submitted to the attention of the 4-H PDC in writing. Electronic versions (email/ fax) will also be accepted. Verbal recommendations will not be considered.
2. Your suggestions must be signed and dated. Suggestions will not be considered without a dated signature.
3. All suggestions are due by September 5, 2025 at 5:00 p.m. Suggestions will not be considered after the deadline.
4. Suggestions should be turned in or mailed to: Cowley County Extension Office, 311 E 9th, PO Box 538, Winfield KS 67156. The 4-H Program Development Committee reviews all department evaluations and acts on written recommendations which are then made to the Fair Board. Verbal recommendations CANNOT be considered.

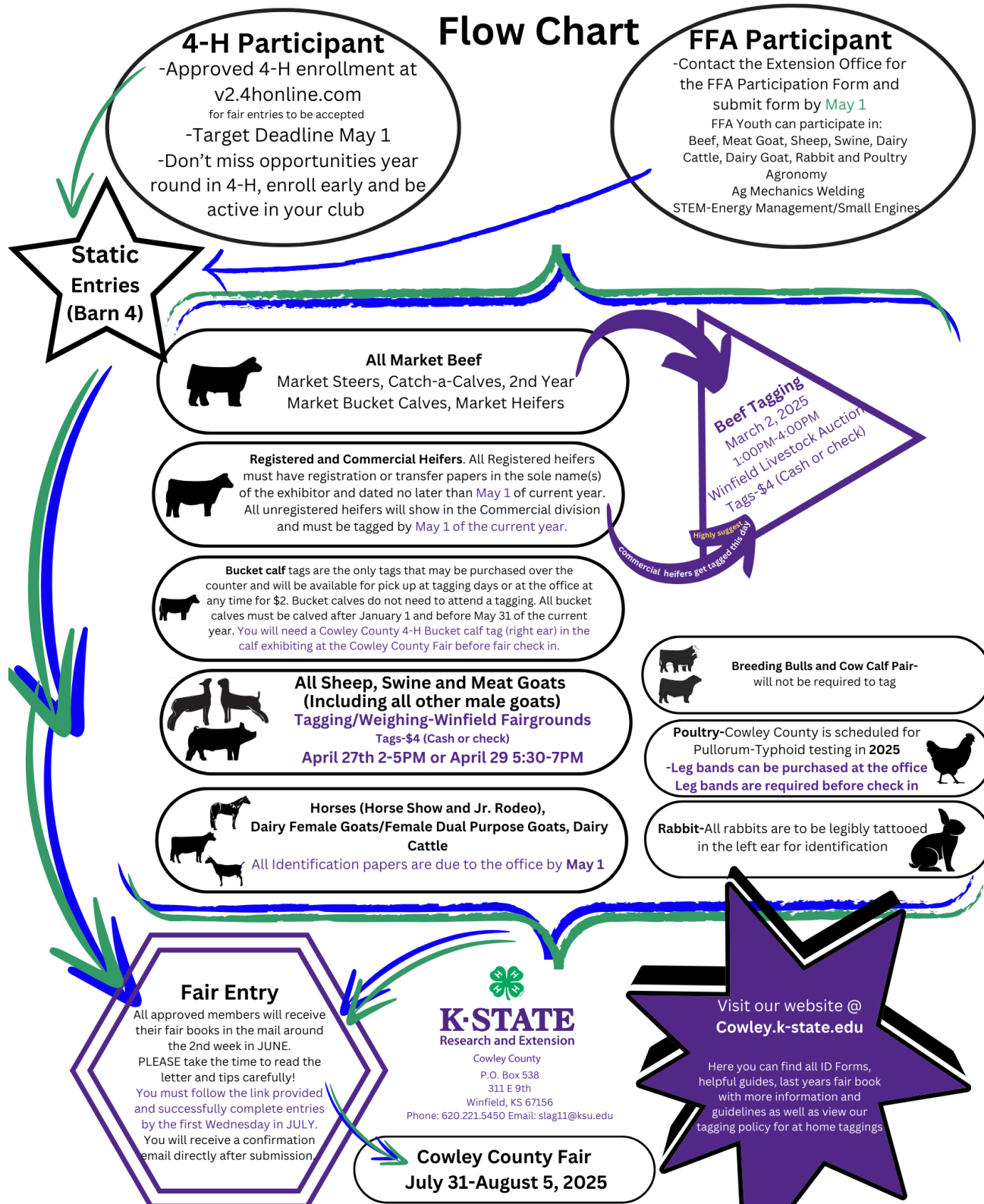
Fair Camping: The Cowley County Fair Board requests that 4-H families who camp during the fair camp in the campground area (west of the barns) at the fairgrounds, not the Pecan Grove. This better insures the safety of our participants, eliminating the need to cross 14th Avenue. The fairboard will not provide security or trash pick up to the Pecan Grove. A complete listing of camping rules can be found at www.cowleycountyfair.com. UTV's may only be driven by licensed drivers, have working lights and must be fully insured.

Favorite Foods Contest & Decorated Foods Judging July 22, 2025 11 a.m. - 1 p.m. in Mossman Hall at Southwestern College, Winfield. In an effort to protect and preserve decorated food entries, judging for 4-H decorated foods will be at Southwestern College. This will also be an opportunity for youth to enter exhibits for the Favorite Foods Contest. Learn more about this contest on the KSRE Cowley [website](http://www.cowleycountyfair.com). This is the same day as 4-H Clothing and Fashion Revue judging. (This date is optional, you may choose to exhibit decorated foods at the fair on Friday.)



Fair Flow Chart

Cowley County Fair Youth Participation Flow Chart



FAIR - 4-H Foodstand

The money raised in the Food Stand is used to support our 4-H programs through scholarships to state 4-H events, transportation to Discovery Days, volunteer development awards and recognition at Achievement Night, officer training and much more. Here is the schedule of workers for the Food Stand at the Cowley County Fair. An additional Thursday evening shift has been added. 4-H alumni generously give of their time to help raise money for 4-H during this shift. However, current 4-H families are welcome and encouraged to work during this time.

Please assign at least 5 adults to each shift. They are needed to run the cash register, operate the grill and appliances, and help with food preparation.

Each club is REQUIRED to have a shift manager. The shift manager must be a responsible adult or teen. Shift managers should recruit workers, view the shift manager orientation video and turn a list of volunteers in to the Extension Office by Thursday, July 24th.

2025 4-H Foodstand Schedule

Friday, Aug 1

7:30am - 12:45pm Shooting Sports
12:30pm - 5:45pm Muddy Creek
5:30pm - 11:00pm Tisdale

Saturday, Aug 2

7:30am - 12:45pm Dexter-Otto
12:30pm - 5:45pm Sunrise & Country View
5:30pm - 11:00pm Burden

Sunday, Aug 3

11:00am - 5:45pm Martha Washington
5:30pm - 11:00 p.m. Walnut Valley

Monday, August 4

8:00am - 1:00pm Floral
12:45pm - 5:45pm Cameron
5:30pm - 11:00pm Udall

FAIR - 4-H - Barn 4

2025 Barn 4 Supervisor Schedule

Supervisors are vital to the success of our county fair. It is how we keep our exhibit areas looking nice and provide assistance to our many patrons. Clubs are assigned times to have a committee of at least one adult (1) and two youth present (2) in Barn 4 display area.

Clubs must turn in names by Thursday, July 24th.

Friday, Aug 1

6:00pm - 7:30pm Floral
7:30pm - 9:00pm Cameron
9:00pm - 10:45pm Country View

Saturday, Aug 2

6:00pm - 7:30pm Walnut Valley
7:30pm - 9:00pm Muddy Creek
9:00pm - 10:45pm Udall

Sunday, Aug 3

6:00pm - 7:30pm Shooting Sports
7:30pm - 9:00pm Tisdale
9:00pm - 10:45pm Dexter-Otto

Monday, August 4

6:00pm - 7:30pm Martha Washington
7:30pm - 9:00pm Sunrise
9:00pm - 10:45pm Burden

Cowley County Fair

The Cowley County Fair King & Queen Contest is designed to bring to the attention of the general public the outstanding youth of our county, to promote youth development organizations involved with the fair and to promote the Cowley County Fair. Entry Deadline - **June 6, 2025**. All applications will be reviewed by the judging committee prior to the Cowley County Fair. Late applications will not be accepted.

RULES:

1. Each Cowley County Fair Group, FFA Chapter or 4-H Club may nominate King and Queen candidates from their eligible membership.
2. All contestants must be nominees of one Cowley County organization named above.
3. All contestants must be exhibitors in the Cowley County Fair in the year nominated.
4. All contestants must be between 14 and 18 years of age before January 1 of the current year.
5. Contestants who have previously served as King or Queen will not be considered.
6. Contestants who have not served as King or Queen may re-enter the contest.
7. Final selection of King and Queen will be made by a combination of judges' scores and balloting by Cowley County Fair board members.
8. Candidates may not bring additional items, such as scrap books, photo albums, etc. into the interviews. Judges' selections will be based solely on the written application and personal interview.
9. All nominees must complete the King and Queen Entry Form and return to Cowley County Extension, 311 E 9th St. (P.O. Box 538), Winfield, 67156 by 5:00 p.m. on or before June 6.
10. Interviews will be announced when all forms have been collected.
11. Winners will be announced before the goat show of the Cowley County Fair.



INTERVIEWS: Face to face interviews will be conducted by three or more judges selected by the Cowley Fair Board King and Queen Committee. Date and location of the interview TBD. Face to face is defined as physically in the room with the judges. No additional materials may be brought to the interviews.

SCORING: Scoring will be done as follows:

1. Cowley County Fair Activities 30%
2. Club or Chapter Activities 15%
3. School, Church, Community Activities 10%
4. Poise and Personality 20%
5. Personal Appearance 10%

Click [HERE](#) for complete list of rules and entry form

RESPONSIBILITY OF COWLEY FAIR QUEEN AND KING COURT:

1. Attend all Cowley County Fair shows and sales during the current fair. May be excused to attend functions to represent Cowley with approval of Cowley Fair King and Queen Committee or committee advisors.
2. Must be available to present awards to all Cowley Fair Shows, responsibilities being divided if one or the other is showing.
3. A schedule of time and places where attendance is required will be provided by the Cowley Fair King and Queen Committee. The King and Queen will be responsible for assigning all court members to Cowley County Fair shows and events. Court members will meet immediately following the coronation to review responsibilities.
4. The King and Queen shall represent Cowley County Fair.

Cowley County Fair



Cowley County Fair



- | | |
|--|---|
| <input type="checkbox"/> Ag Mechanics Welding | <input type="checkbox"/> Horticulture/Floriculture/Forestry |
| <input type="checkbox"/> Agronomy | <input type="checkbox"/> Interior Design & Architecture |
| <input type="checkbox"/> Cloverbuds | <input type="checkbox"/> Photography |
| <input type="checkbox"/> Electric and Renewable Energy/Small Engines | <input type="checkbox"/> Sewing and Textiles |
| <input type="checkbox"/> Fashion Revue/Shopping in Style | <input type="checkbox"/> Veterinary Science |
| <input type="checkbox"/> Food & Nutrition | <input type="checkbox"/> Visual Arts |



If you have any interest in volunteering in these areas please reach out to Sarah at 620.218.1816

Example of Livestock Destination Card

<u>LIVESTOCK DESTINATION</u>	
<u>DESTINATION</u> (Check one) <input type="checkbox"/> Home <input type="checkbox"/> Base <input type="checkbox"/> Locker Name _____ <input type="checkbox"/> Market Premium Sale (Terminal) <input type="checkbox"/> Market Premium Only Sale/Take Home <input type="checkbox"/> Market Premium Only Sale/ Meat is already Sold Meat Buyers Name _____ Meat Buyers Phone # _____ Locker Name _____ <u>Check to enter animal in Carcass Contest</u> _____	<div style="display: flex; justify-content: space-between;"> <div style="text-align: right; padding-right: 10px;"> Exhibitor Club Tag ID Specie/Weight </div> <div style="background-color: #cccccc; width: 100%; height: 100%; border-radius: 10px;"></div> </div> <div style="display: flex; justify-content: space-between; margin-top: 20px;"> <div style="width: 50%;"> _____ Signature </div> <div style="width: 50%;"> _____ Phone Number </div> </div>

If you have ANY questions about the Livestock Destination Card, please contact Sarah **before** the fair.

Cowley County Fair**MARKET LIVESTOCK SALE**

Auction Clerk - Edw. B. Stephenson & Co., CPA

Monday, August 4, 2025 - 6:45 p.m. Cowley County Fairgrounds

1. The 4-H and FFA Market Livestock Sale will be for Market: Beef, Swine, Sheep, Goat and Rabbit Meat Pen only.
2. The sale order for 2025 will be: Meat Goat, Sheep, Beef, Meat Rabbit, Meat Bird and Swine
3. Animals sold through the sale must be exhibited at the Cowley County Fair.
4. Each 4-H and FFA exhibitor can participate in the Market Sale with one animal or rabbit meat pen only, and must exhibit their own animal in the sale ring. Exceptions may be considered for a substitute sale exhibitor with prior written approval prior to fair pre-entry deadline of a majority of the Market Livestock Sale Superintendents and the Cowley County Extension Agents for the following reasons: An official State or National 4-H/ FFA/Agricultural Industry event whereby the exhibitor is a documented officer or committee person.
5. The Market Livestock Sale Committee will announce a base bid on all species prior to the sale to be used only on all market animals sold through the Cowley County Fair. The base bid for all market animals will be subject to discounts for weight ranges according to industry standards. Discounts will be announced prior to the sale.
6. A charge of 3 percent of the total premium value only will be made for all animals. No commission will be charged on the base bid value of the animal. This fee is used to provide a special barbecue honoring buyers and other supporters of the Market Livestock Sale. It also covers advertisements, buyer's ribbons, and supplies.
7. All market livestock will be shown and sold based on official weight at fair weigh-in.
8. Each exhibitor must complete a "Livestock Destination" card for all livestock species eligible for the market livestock sale. This card must be turned in to the species superintendent by 2:00 p.m. on Saturday. There will be a 3% dock of premium money for cards which are turned in late or marked incorrectly.
9. All animals entering the sale ring that are not "take home" will be sold and must be picked up by a state inspected locker plant or to the base bid buyer.
10. Steers must be controlled without use of extra ropes or lariats.
11. 4-H/FFA members selling animals through the sale are expected to feed/water and care for them up until the time they are loaded on the truck or taken home.
12. To qualify for the auction, market animals' weight must fall within the following ranges. No shrinkage will be calculated on any animals.
 - Market steers/heifers- minimum of 1,050 pounds
 - Market hogs- 230-290 pounds
 - Market lambs- Minimum of 90 pounds
 - Meat Rabbit meat pen- 3-5 pounds each
 - Meat Bird pen of 3-3 pound Minimum each
 - Market goats- minimum of 50 pounds.
13. Starting in 2025 the Market Livestock Sale is not a mandatory terminal sale, individuals will have the option to select "premium only and take home" on their Livestock destination card. These animals will sell as premium only and animal will go home with the youth member.

Kansas State Fair - Sept. 5-14, 2025**What Can I Exhibit at the Kansas State Fair??**

If your 4-H Age is 9 and older, you are eligible to enter a purple-ribbon exhibit from the Cowley County Fair for judging at the Kansas State Fair in the 4-H Division: photos, food items, gift baskets, educational displays, some notebooks, entomology educational display, entomology collection, clothing construction, horticulture, field crops, floriculture, fiber arts, rabbits, energy management, robotics, rocketry, astronomy, geology collection, geology educational display, woodworking, Shooting Sports educational display, wildlife educational display, poultry, demonstration/illustrated talk and forestry notebook.

Two Senior and Intermediate Division Champions may be selected in Fashion Revue Shopping in Style and Constructed categories to compete at the Kansas State Fair.

Judges will choose six Visual Arts exhibits to be displayed at the Kansas State Fair.

It is the member's responsibility to complete pre-entry by August 8 in order to exhibit at the Kansas State Fair. Pre-entries may be made in the 4-H office at the Cowley County Fair, at checkout Tuesday morning in Barn 4, or in the Extension Office following the fair.

No phone entries will be accepted.

Ribbon Premium/ Gate Passes

As in the past, in lieu of receiving ribbon premium, each 4-Her with KSF exhibits will receive 2 gate passes.

Contests, Events and Activities at the Kansas State Fair

Did you know that the State Fair has so much more for 4-H members to participate in beyond sending an exhibit? Here are a few contests 4-H'ers who are 9 and older can participate in:

Demonstration/Illustrated Talk Contest (must have received a Top Blue at County 4-H Day)

Rabbit Judging

Crops Identification Contest

Photography Judging Contest

Poultry Judging

Contest Family & Consumer Sciences Judging (must qualify for a team)

Kansas State Fair Volunteers

The highlight of the Kansas 4-H program is the Kansas State Fair. This year's State Fair is September 5th-14th. It takes many volunteers to make the State Fair a success. We are currently looking for volunteers to help. If you are interested in assisting at the State Fair, please email Sarah by Wednesday, Aug. 6th. Gate tickets are provided for the days that you volunteer. Job descriptions and details of the opportunities available can be obtained at the Extension Office.

State Livestock Events

GRAND DRIVE & KJLS IMPORTANT DATES

April 20	Last Day to Order Beef DNA Envelopes
May 1	Market Beef Nominations Due Online & DNA Postmarked
June 5	Last Day to Order Small Livestock DNA Envelopes
June 15	Small Livestock Nominations Due Online & DNA Postmarked -Market Swine, Commercial Breeding Gilt -Market Lamb, Commercial Breeding Ewe -ALL Meat Goat (<i>Market & Breeding</i>)
	Commercial Heifer Nominations Due Online & DNA Postmarked
	Registered Breeding Heifer Papers in Exhibitor's Name
	Registered Steer Papers in Exhibitor's Name
	Registered Breeding Gilt Papers in Exhibitor's Name
July 1	Registered Breeding Ewe Papers in Exhibitor's Name
July 15	Kansas State Fair Grand Drive Entry Deadline
July 25	Kansas State Fair Grand Drive Late Entry Deadline
August 15	KJLS Entry Deadline
August 31	KJLS Late Entry Deadline
Sept. 5 - 7	Kansas State Fair Grand Drive
Oct. 3 - 5	KJLS

*All market animals must be nominated to be eligible for either show, regardless of breed or gender.

**All commercial breeding females must be nominated to be eligible for either show.

***Registered breeding females must be in the exhibitor's name by the appropriate date to be eligible for either show. Refer to show rules for details.

****All meat goats, including market, commercial breeding does, and registered breeding does must be nominated to be eligible for either show.

Club Reports

The regular monthly meeting of the Dexter-Otto 4-H club met May 12th at the Dexter Community building. The meeting started at 7p.m. and there were 28 members and 2 community leaders present. Roll call was answered by naming your favorite ice cream.

Community leader Rachel Clapp reminded everyone to check the Flash for all the upcoming events.

Our next meeting be held on June 1st at the Tisdale Methodist Church. Meeting starts at 7p.m., please plan to join us if you haven't found a local 4-H club.

John Walker

Dexter-Otto 4-H reporter

Club Meeting - NO May Meeting - Happy Memorial Day/Summer Break!
Next club meeting; Monday, Aug. 25th.

Muzzleloader/Small Bore Opens; Tuesday, June 10th - Watch for emails for more details.

Shotgun practice; 3rd Sunday, June 15th 2:00 at the meadow - weather allowing. **Must email for a relay time for member to be on the practice line.

Air Discipline (BB, Air Pistol, Air Rifle) Season Closed. Next practice Sunday, Nov. 2, 2025.

Archery practices- Season Closed. Watch emails for qualifier dates and practice to begin after fair.

Get those *Sportfishing* entries ready for the fairbooth, Saturday, Aug. 2nd!

Austin Waite
Cowley County 4-H Shooting Sports Coordinator
620-222-1982

P.O. Box 422
Winfield, KS 67156

www.4hshootingsportscowleyks.com

<https://www.facebook.com/cowleycounty4hshootingsports>



SPORTFISHING — SLAM —



A "Slam" is defined as an individual participant catching 4 different species or subspecies of fish OR visiting 4 different hatcheries or rearing stations. Example: an angler catches a perch, a bluegill, a bass and a catfish and completes the requirements for the pan slam.

**Top Angler
entry will
receive
recognition at
6:00 pm on
Aug. 2nd.**



**First 5
entries will
receive a
KWPD hat!**

Requirements:

- All four species or subspecies of fish do not have to be caught in the same year - any regulated fishing gear may be used - pole, bow-fishing, etc. The completion of the sport-fishing slam can be accomplished anytime throughout the year and over multiple years if needed.
- 4-H Members must complete the verification sheet with the appropriate signatures and photos to document completion. Enrollment in the sport-fishing project is encouraged but not mandatory to enter.
- Participants must submit a photo of them with each of the four species or subspecies of fish or at the hatchery or rearing station.
- All entries must contain a witnessing adult signature.
- Verification sheets with photos need to be brought to the Cowley County 4-H Shooting Sports Club fair booth by noon on Saturday, Aug. 2nd or emailed to cowley4hshootingsports@gmail.com

Click here for the [Shooting Sports Sportfishing Slam Verification Sheet](#)

Free Stuff!!

2025 GRAND HOUSE DRAWINGS

Each time a 4-Her participates in these events/programs, their name will be added to the drawing!

- YQCA Training
- Spring Shows
- Celebrate Ag
- Judging Contest and practices
- Livestock Programs
- Livestock Training Clinics
- Trips
- Livestock Record Book Submission

Drawing will be held at the
2025 Open House dinner
October 18th

DRAWING INCLUDES CHOICES OF:

- LIVESTOCK SHOW BOX**
- CLIPPERS**
- CLIPPER BAG**
- LIVESTOCK BLOWER**
- AND MORE!**

K-STATE
Research and Extension



Cowley
County

Kansas State University Agricultural Experiment Station and Cooperative Extension Service
K-State Research and Extension is an equal opportunity provider and employer.

[Cowley County 4-H](#)

[K-State Research and Extension - Cowley County](#)

[Cowley County Classic Beef Show](#)

[Cowley County Sheep and Meat Goat Show](#)

[Cowley County Goat Project](#)

[Cowley County Sheep Project](#)

[Cowley County Swine Project](#)

[Cowley County Horse Project](#)

[Cowley County Dog Project](#)

[Cowley County 4-H Sweepstakes Team](#)

[Cowley County Dairy Project](#)

[Cowley County Poultry and Rabbit Project](#)



Find us on:
facebook®

2025 Livestock Production Essay

Who can participate: 4-H Members exhibiting livestock at the 2025 Cowley County Fair AND submitting a 4-H Project Report.

Participants exhibiting these species will be eligible:

- * Beef
- * Bucket Calf
- * Dairy Cattle
- * Swine
- * Sheep
- * Meat Goat
- * Dairy Goat
- * Meat Rabbits
- * Production Poultry



Due
September 19, 2025
Both 4-H Project Report and Essay

Potential topics to build on:

- * **Production-** Breeding animals, what are your future goals? What specific details do you need to consider if you plan to keep this animal and breed them?
- * **Finances-** pasture stocking rate, available pasture/rental rates, price to feed, maintain, breed, house this animal?
- * **Marketing-** Marketing to sell this animal or their progeny for a return on investment.
-Break down your plan
- * **Industry Expectations-** interview Bankers, FSA Loan Officers, Extension Agents, Local Farm/Ranchers, study and cite University publications.
- * **Goal Setting-** does your animal have products to sell? (milk/eggs/offspring) What does your business plan look like for that and how are you going to make that work and grow to be a profitable business owner?

-Do you have a market animal? How are you feeding that animal to be the most profitable on the rail? Are you marketing that animal before the fair to get the best price? Do you know how much meat that animal provided after the fair? What is your goal as you feed this animal and how did you do? Hanging weight, back fat, pounds of product.

If you need help with this project, please schedule an appointment with Sarah to help you explore ideas.

The intent of this essay is to dig deeper into the production side of the industry, learning from publications and professionals in our area. You will want to plan to have it proof read by multiple people.

Fair Resources

[2025 Official Fair Rule Book](#) - Paper books and entry instructions will be mailed mid June.

[Consultative Judging of a 4-H Project Exhibit](#)

[KSRE Cowley County Fair webpage](#)

[Kansas State Fair 4-H Exhibitor Handbook](#)

Kansas Clover Classroom

[Dynamic Displays](#)

[Pollinators](#)

[Take A Hike!](#)

Many more resources available on the [Clover Classroom page](#).

4-H AMBASSADORS

PURPOSE:

WORK TOGETHER WITH A TEAM OF APPROXIMATELY 3-8 AMBASSADORS AND AN ADULT ADVISOR TO DEVELOP A PUBLIC INFORMATION PROGRAM FOR THE COWLEY COUNTY 4-H PROGRAM.

RESPONSIBILITIES:

PROMOTE 4-H TO ALL AUDIENCES
ORGANIZE 4-H PROMOTIONAL EVENTS AND ACTIVITIES
DEVELOP COMMUNICATION SKILLS

QUALIFICATIONS:

HIGH SCHOOL FRESHMAN TO AGE 18
ENTHUSIASM FOR 4-H
INTEREST IN PROMOTING THE 4-H PROGRAM

TIME REQUIRED:

1 OR 2 YEAR TERM
4-8 HOURS PER MONTH

THROUGH THIS EXPERIENCE, 4-H AMBASSADORS WILL HAVE OPPORTUNITIES TO LEARN, PRACTICE AND IMPROVE COMMUNICATION, MARKETING, EMPLOYABILITY AND JOB SKILLS.

APPLY NOW!

CLICK HERE!
to apply for
4-H
Ambassadors

4-H Foster Kids Grant Opportunities

The purpose of the Kansas 4-H Resource Family Project and Camp Grant Programs is to provide financial assistance for foster youth and their resource families who want to participate in learning opportunities available through 4-H. Thanks to generous donors, the Kansas 4-H Foundation has funds available to support Kansas resource families and the children in their care who are current members or interested in becoming members of 4-H.

Kansas 4-H is open to all youth ages 7 through 18 wanting to expand their learning opportunities. 4-H focuses on developing confident, capable, caring, and responsible citizens. 4-H offers a wide range of project areas that youth may learn from, ranging from agriculture to food and nutrition to aerospace and photography. Although being involved in the local club can provide an opportunity for youth to learn from each other and contribute to others through community service projects, volunteers and family support are also important elements of 4-H as volunteers and parents serve as club and project leaders that guide and mentor youth.

General Requirements:

Children must enroll as 4-H members through 4-H Online.

- Each eligible child must submit a grant application. The application can be found at <https://www.kansas4-h.org/resources/accessibility.html>.
- Resource families are asked to complete the Kansas 4-H Resource Family Project and Camp Grant Programs Application in detail with the 4-H member's assistance.
- Grant must include an itemized budget.
- Grant applications will be reviewed by a committee. Kansas 4-H reserves the right to adjust the funding amounts requested based on the availability of funds and merit of application; not all applications may be funded.
- All grant applications should be scanned and emailed to kansas4h@ksu.edu with the subject: 4-H Foster Kid Grant. The application deadline is July 1.
- Grant funds not used by the eligible 4-H member must be returned to the Kansas 4-H Foundation by October 1, current year.

Misc.

CLUB SHIRTS

4-H Council has voted to pay all royalty fees for Get Branded until Sept 30, 2025.

If your club is thinking about getting shirts made, PLEASE use our local merchant.

Get Branded is licensed and approved for all KSRE/4-H printing.

Apparel approval forms can be found on our website.

Get Branded is located at 915 Main St. Winfield, KS 67156
ph. 620-402-6111

I pledge my **H** **AD** to clearer thinking,

my **HE** **RT** to greater loyalty,

my **H** **NDS** to larger service,

and my **HE** **LTH** to better living,

for my club, my community, my country

and my world. 



4-H'ers are 2X
more likely to make
healthier choices.*

Friends of Extension Corner
The Friends of Cowley County Extension are excited about the 2025 Fall for Extension Fundraiser. The dinner and auction is scheduled for Saturday, November 22nd at Baden Square, Winfield. Raffle items will be will be announced soon!

Your club can win a pizza party! Contact Sarah to find out how!

Cowley County 4-H Enrollment

✿ [4-H Online Enrollment Link](#)

✿ [Cowley County KSRE Website with 4-H Enrollment Information](#)

The 4-H year runs Oct. 1st. to Sept 30. **ALL YOUTH and ADULT VOLUNTEERS** participating in the 2024-2025 4-H year should enroll.

In order to be a regular member of Cowley County 4-H, the member must be 7 years old before January 1, 2025.

[Cloverbuds](#) is for children ages 5-6 before January 1, 2025.

[Project Selection Guide](#) (includes descriptions of all projects)

[Setting 4-H Project Goals](#)

[4-H Project Record Books](#)

[ZBooks](#) (online record keeping option)

Click [here](#) to sign up for a County Committee

DID YOU KNOW??

The [Kansas Clover Classroom](#) is packed with helpful project information

4-H Scholarships

Get Financial Help Attending Events

The Cowley County 4-H Development Fund is our local 4-H foundation created in 1995 to assist Cowley County 4-H'ers take part in educational events and activities. Funding is provided by gifts from supporters. Each year, the 4-H Development Fund awards college/trade school scholarships to high school seniors and college/trade school freshmen. Beginning in 2015, the Development Fund introduced "Leadership Development Grants".

Leadership Development Grants are available by application to local 4-H members who are registered for a state or national leadership event such as Discovery Days, National 4-H Congress, Kansas Youth Leadership Forum, Citizenship Washington Focus and more. Applications are available from the Cowley County Extension Office, or online at cowley.k-state.edu. Applicants must submit an essay, write a thank you note to a Development Fund donor and present a program about their experience to a 4-H club or county-wide group following attendance at the event. For more information, contact Sarah at slag11@ksu.edu or 620-221-5450.

[Challenge of Champions Scholarship Opportunity](#) information about the Challenge of Champions can be found on the Kansas State Fair [webpage](#).

Scholarship Applications found at cowley.k-state.edu/4-Hyouthdevelopment/forms:

[4-H Council Scholarship](#)

[Junior Leaders Scholarship](#)

[4-H Development Fund Scholarship](#)

[Robert Austin Memorial Horse Scholarship](#)

[Cowley County 4-H Development Fund Leadership Development Grant](#)

[Rock Springs 4-H Camp Scholarship](#)

Cowley County Extension Office

Contact us:

cl@listserv.ksu.edu (620) 221-5450 or (620) 441-4565

Sarah LaGrone, 4-H Youth Development, slag11@ksu.edu

Becky Reid, Family & Consumer Sciences, bkreid@ksu.edu

Jeff Seiler, Ag & Natural Resources, jseiler4@ksu.edu

Cindy Stephens, Office Professional, cstephens@ksu.edu

Physical Address: 311 E 9th Ave. Winfield, KS 67156

Mailing Address: PO Box 538, Winfield, KS 67156

K-STATE
Research and Extension



Office Hours
Monday through Friday
8-11:30 a.m.
and
12:30 - 5 p.m.

Cowley County Extension Council Executive Board

The Cowley County Extension Council Executive Board meets monthly and conducts the business of the Extension Office. The Extension Council monthly meeting will be held on Thursday, June 5, 2025 at 5:30 p.m. in the Assembly Room at the Cowley County Courthouse.

Friends of Extension

As someone who contributes time, talent and/or treasure to the benefit of Cowley County Extension, you are invited to be part of the Friends of Cowley County Extension organization. The group will alternate between morning and evening meetings to plan fundraising and advocacy events to support K-State Research and Extension Cowley County.

4-H Development Fund

Did you know? Tax deductible contributions can be made to the 4-H Development Fund (c/o PO Box 538, Winfield KS 67156) or to the Friends of Cowley County Extension Endowment (c/o Legacy Regional Community Foundation, 1216 Main Street, Winfield KS 67156).

Legal Stuff

K-State Research and Extension is committed to providing equal opportunity for participation in all programs, services and activities. Program information may be available in languages other than English. Reasonable accommodations for persons with disabilities, including alternative means of communication (e.g., Braille, large print, audio tape, and American Sign Language) may be requested by contacting the event contact Sarah LaGrone four weeks prior to the start of the event at 620-221-5450. Requests received after this date will be honored when it is feasible to do so. Language access services, such as interpretation or translation of vital information, will be provided free of charge to limited English proficient individuals upon request. Kansas State University Agricultural Experiment Station and Cooperative Extension Service K-State Research and Extension is an equal opportunity provider and employer.