

# THE 4-H FLASH NEWSLETTER

## In this issue:

<a href="#">Community Leaders</a>	2
<a href="#">Important Dates &amp; Deadlines</a>	2
<a href="#">4-H Council/ Jr Leaders/</a>	3
<a href="#">Volunteers Needed</a>	3
<a href="#">Graduation Cords</a>	4
<a href="#">High School Seniors</a>	5
<a href="#">Celebrate Ag</a>	6
<a href="#">Tractor Safety</a>	7
<a href="#">Sitter Solutions</a>	8
<a href="#">State Events</a>	9
<a href="#">County Events</a>	10
<a href="#">Barn to Ring</a>	11
<a href="#">Fair Flow Chart</a>	12
<a href="#">Fair King &amp; Queen</a>	13
<a href="#">Market Livestock Sale</a>	14
<a href="#">Horse Project</a>	15
<a href="#">Upcoming Events</a>	16
<a href="#">Production Essay</a>	17
<a href="#">Club Corner/ Clover Classroom</a>	18
<a href="#">Shooting Sports</a>	19
<a href="#">Bass &amp; BBQ</a>	20
<a href="#">KS Sportfishing</a>	21
<a href="#">KS Youth Range Camp</a>	22
<a href="#">4-H Enrollment</a>	23
<a href="#">About Us</a>	24

**May 2025**

May is HERE!! This year is flying by and Fair will be here before we know it! What are you doing to prepare your projects to exhibit at the Cowley County Fair? Are you practicing your foods project perfecting your skills and recipe? Or maybe you are spending some extra time with your animals to help get them calmed down? You also could be evaluating your animals rate of gain to make sure you will make weight by the fair. Whatever you are doing to further your 2025 goals, KEEP IT UP and KEEP WORKING HARD!

Be sure to follow on Facebook and in the 4-H Flash Newsletter so you do not miss all the opportunities that will be available to help you reach your goals.

—*Sarah LaGrone*



### **ATTN FAIR CAMPERS!**

Mark your calendars! You will be able to access the fairgrounds to claim/rope off your camp site on **Tuesday, July 22nd.**

Contact us:

[cl@listserv.ksu.edu](mailto:cl@listserv.ksu.edu) (620) 221-5450 or (620) 441-4565

Sarah LaGrone, 4-H Youth Development, [slag11@ksu.edu](mailto:slag11@ksu.edu)

Becky Reid, Family & Consumer Sciences, [bkreid@ksu.edu](mailto:bkreid@ksu.edu)

Jeff Seiler, Ag & Natural Resources, [jseiler4@ksu.edu](mailto:jseiler4@ksu.edu)

Cindy Stephens, Office Professional, [cstephens@ksu.edu](mailto:cstephens@ksu.edu)

## Community Leaders

### May Check-Up

- \* PLEASE download a new roster (in 4honline) for each club meeting's roll call. Is everyone enrolled?
- \* Are you reviewing project lists, to be sure 4-Hers are enrolled in the project they intend to participate in at the Fair?

### Review

- \* Read the *4-H Newsletter* and mark important dates on the calendar. (Have you noticed all the links provided?)
- \* Review highlights from the *4-H Newsletter* at your club meeting.
- \* Have you checked out the [4-H Club Corner](#)?

### To-Do

- \* Check in with project leaders to ensure they are on task and holding meetings.
- \* Make sure 4-H Council report is given to the club
- \* Check club mailbox at Extension Office

### Promote/Recruit

- \* Celebrate Ag, May 10th
- \* [4-H Media Team](#)
- \* Sign-up for [County Committees](#)

### Remember

- \* [Horse ID papers](#) due May 1st
- \* Dairy ([Cattle](#) & [Goat](#)) ID/Lease papers due May 1st
- \* Club t-shirts REQUIRE approval, the form to do so is on our [website](#) under 4-H Youth Development, forms, Cowley County 4-H Apparel Approval Form

## Important Dates and Deadlines \*underlined text is a link

### May

- 5/1 TARGET DEADLINE to be enrolled in 4-H (to receive a paper fair book)
- 5/1 [Horse ID](#) papers due
- 5/1 [Dairy Cattle](#) & [Dairy Goat](#) ID/lease papers due
- 5/1 KSF/KJLS Beef [Nominations](#) due
- 5/10 [Celebrate Ag](#)
- 5/19 4-H Council & Junior Leaders Mtgs

### June

- 6/3 Southeast Area Livestock Day
- 6/4-6 [Discovery Days](#)
- 6/13-15 [Geology Field Trip](#)
- 6/15 KSF/KJLS Sheep, Swine & Goat [Nominations](#) Due
- 6/27-28 [Insect Spectacular](#)
- Starting in June, [Rock Spring Camp](#) ([scholarships available](#))

### July

- 7/2 **ENROLLMENT ENTRY DEADLINE** to show at the Cowley Co. Fair (must have an approved enrollment status by 7/2)
- 7/2 ADD/DROP Projects deadline
- 7/2 **FAIR ENTRY DEADLINE**
- 7/15 [KSF Livestock Entries](#) Due
- 7/31 - 8/5 Cowley County Fair

### August

- 8/1 [KJLS entries](#) due
- 8/7 [Wheat Expo](#)
- 8/15 Kansas State Fair non-livestock pre-entries due to the Extension Office
- 8/16 4-H [Horticulture Judging Contest](#)

### September

- 9/5-14 [Kansas State Fair](#)

[Cowley County Annual 4-H Calendar](#)

[Kansas 4-H Events & Activities Calendar](#)

**4-H Council & Junior Leaders****4-H Council****May 19, 2025 - 7:00 p.m.**

Meeting Location:  
KSRE Assembly Room

If you were selected to represent your club at 4-H Council and find you cannot attend, please let your leader(s) know in advance and find another member to serve in your place.

**4-H Junior Leaders****May 19, 2025 - 6:00 p.m.**

Meeting Location:  
KSRE Assembly Room

If you are 12 and older, you can be part of 4-H Junior Leaders. Youth will learn about leadership through activities. Check out the [Cowley County 4-H Junior Leaders Facebook](#)

**Volunteers Needed**

## Do you have a passion for 4-H Leadership?



Would you like to share your passion with 4-Hers 12 and older? Including fun activities and events! Cowley County 4-H is looking for an adult to be the sponsor/leader of **4-H Junior Leaders**. If you would like to learn more about the volunteer position, please contact Sarah at [slag11@ksu.edu](mailto:slag11@ksu.edu).



Where does it all fit in? Ever wonder how the 4-H county monies happen and where they go? We are looking for 2-4 high school aged 4-H members who would be interested in serving on the **4-H Council Budget Committee** to put together the financial budget plan for council. We meet once in October to put together the financial review report and then another time to create the written finance plan for council monies - called a "proposed budget". Your club council representatives vote on these two items annually for all county expenses and income plan. We need to meet and plan to present at the May 19th council meeting. If interested, contact Debbi Waite, [cowley4hshootingports@gmail.com](mailto:cowley4hshootingports@gmail.com) or leave message at 620-221-2217 and we will meet at the extension office at a convenient time for the members involved.

**Make it happen!**

Cowley  
County[illegible]



**CONGRATULATIONS**  
**COWLEY COUNTY 4-H**  
 **GRADUATES** 



**2025**



Lanie Arnett  
Kyle Bannon  
Edee Boatman  
Kahlyn Fox-Smeeton  
Marshall Groom  
Staton Harrod



Brooke Haunschild  
Corbin Lowe  
Colby Minson  
Matthew Norton  
Andrew Preston  
Andrew Waldschmidt



## Celebrate Ag



JOIN US AS WE

# CELEBRATE AG

**May 10, 2025**

1 - 5 PM

**Open to the Public!**

Demonstrations - Vendors  
Games - Animals

**LOCATION**

### DEMONSTRATIONS

- ✓ Cow Milking
- ✓ Drones in Ag
- ✓ Rainfall Simulator
- ✓ Creekstone Meat Cuts
- ✓ Hoof Trimming and Shoeing

**Winfield Fairgrounds:**  
Winfield, KS 67156



**Brought to you by:**  
Cowley County Conservation District  
K-State Research and Extension  
Cowley County Farm Bureau

## Tractor Safety

**K-STATE**  
Research and Extension

Sumner County  
Sedgwick County  
Cowley County

# TRACTOR SAFETY



To receive certification, students will be required to complete independent coursework and a driving test administered by their employer, along with the in-person class. The course will cover safe tractor and machine operation.



**Pre-Registration  
Required by  
Tuesday, May 27**

<https://bit.ly/TracSafe25>

### DETAILS

- Thursday; May 29, 2025
- Mulvane Middle School; 915 N Westview Dr. Mulvane, KS 67110
- 8:30 a.m. - Mid-afternoon
- Registration Fee- \$20- Includes educational materials and lunch
- Class is limited to 40 students

### CONTACT US

Sumner County 620.326.7477

Sedgwick County 316.660.0153

Cowley County 620.221.5450

K-State Research and Extension is committed to providing equal opportunity for participation in all programs, services and activities. Program information may be available in languages other than English. Language access requests and reasonable accommodations for persons with disabilities, including alternative means for communication (e.g., Braille, large print, audio tape, and American Sign Language), may be requested by contacting the event contact Jeff Seiler four weeks prior to the start of the event (May 1, 2025) at 620-326-7477/316-660-0153/620-221-5450 or [jseiler4@ksu.edu](mailto:jseiler4@ksu.edu). Requests received after this date will be honored when it is feasible to do so. Language access services, such as interpretation or translation of vital information will be provided free of charge to limited English proficient individuals upon request.

**Kansas State University Agricultural Experiment Station and Cooperative Extension Service**

K-State Research and Extension is an equal opportunity provider and employer.

**Sitter Solutions**

# Sitter Solutions

The class for beginning babysitters,  
ages 11-15

**Class dates/locations:**

## ARKANSAS CITY

**Wednesday, May 28**

**9:30 a.m. -2:30 p.m.**

## WINFIELD

**Friday, May 30**

**9 a.m. - 2 p.m.**

\$10 class fee includes:

- Lunch and snacks
- Babysitting Manual
- How to entertain children with a sitter's magic bag
- Tips on starting your babysitting business

**Instructor:**

Becky Reid, Family and  
Consumer Sciences Agent



**K-State Research and Extension**  
**Cowley County**  
311 E 9th  
Winfield KS 67156

K-State Research and Extension is committed to providing equal opportunity for participation in all programs, services and activities. Program information may be available in languages other than English. Reasonable accommodations for persons with disabilities, including alternative means of communication (e.g., Braille, large print, audio tape, and American Sign Language) may be requested by contacting Becky Reid four weeks prior to the start of the event at 620-221-5450, bkreid@ksu.edu. Requests received after this date will be honored when it is feasible to do so. Language access services, such as interpretation or translation of vital information, will be provided free of charge to limited English proficient individuals upon request.

**Kansas State University Agricultural Experiment Station and Cooperative Extension Service**  
K-State Research and Extension is an equal opportunity provider and employer.

A course requires at least 5 participants to offer the class. Call 620-221-5450 to register or scan QR code:



## Upcoming State Events



Registration  
Closes  
May 16th

**REGISTER TODAY**

**JUNE 13-15**  
**KANSAS 4-H GEOLOGY FIELD TRIP**

**CONCORDIA KANSAS**

**K-STATE**  
Research and Extension

Kansas State University Agricultural Experiment Station and Cooperative Extension Service.  
K-State Research and Extension is an equal opportunity provider and employer.



Open to 4-H Geology project members and their families - everyone in attendance (ages 0-120) are asked to register for the event.

**WHEN:** June 13-15th

**WHERE:** The headquarters for the 2025 4-H Geology State Field Trip is the Cloud County Community College (Concordia, KS)

**WHAT:** A variety of workshops and activities are planned for Friday and Saturday evenings. A variety of stops are planned on the Field Trip Saturday and Sunday. Project members are encouraged to participate in judging and quiz bowl. A catered supper will be provided Saturday evening for \$15.00 per person and we will have a variety of educational publications for sale through the Kansas Geological Survey.

**REGISTRATION DEADLINE: May 16th - You must register all those who plan to attend including siblings ages 0-18 and all adults 19 and up - One registration per person NO LATE REGISTRATIONS and NO registrations at the door.**

More information and to register [here](#).

**Shutterbug events** are one of the best events you can attend to learn new photography techniques, all about camera settings, and try out photography judging! These workshops are organized and facilitated across the state by members (and seasoned photographers) of the State 4-H Photography Action Team. Participants can rotate through workshops in the morning, when lighting is still good and the event usually runs until 12:00. They concentrate on a variety of aspects of composition - typically what judges look for in a good photo. Other fun and different techniques are taught that may surprise you! More information [HERE](#).



## 2025 Kansas 4-H Insect Spectacular

It's time to get registered for the 33rd Kansas 4-H Insect Spectacular, which will be held Friday and Saturday, June 27-28. The event will be held in El Dorado, KS at the Butler County Community Building. This event is open to all youth and volunteers interested in 4-H Entomology! One parent/guardian from each family must register and attend with children.

Learn about collecting, storing, identifying, and pinning your insects for exhibit. All levels of experience are encouraged to attend, from beginning to advanced. This is a fun event, designed to encourage curiosity and the sharing of knowledge. For event info, and to register, visit:

<https://www.kansas4-h.org/educational-experiences/project-based-events/conferences-events/insect-spectacular/>

**Registration closes May 26.**

## Upcoming County Events




**FAIR FAMILY TRAINING**

**FRIDAY, JUNE 20, 2025**

INFORMATION BOOTHS OPEN-5:00 PM  
FAIR ENTRY, DESTINATION CARDS /SALE REVIEW  
AND FAIRBOARD Q&A- 6:00 PM

TISDALE METHODIST CHURCH GYM  
17507 US-160 WINFIELD, KS 67156

**K-STATE** Research and Extension  
Cowley County



**ATTENTION PLEASE!**

**ALL SPECIE**  
\*Omitting Swine

**HOOF AND NAIL CARE**

**June 21, 2025**  
**Time TBD**  
**Winfield Fairgrounds**

Do you know how to maintain your animals hoof needs? Come learn and get your animals hooves or nails trimmed

\*Beef will have a professional hoof trimmer  
Scales will be available



## Upcoming County Event




# BARN TO RING DAY CAMP

**JUNE 28, 2025**

**CATTLE AND HOGS**

**9:00 AM -12:30 PM**

**SHEEP AND GOATS**

**1:00 PM- 3:30 PM**

**LUNCH PROVIDED @ 12:30PM**

KANSAS STATE UNIVERSITY IS COMMITTED TO MAKING ITS SERVICES, ACTIVITIES AND PROGRAMS ACCESSIBLE TO ALL PARTICIPANTS. IF YOU HAVE SPECIAL REQUIREMENTS DUE TO A PHYSICAL, VISION, OR HEARING DISABILITY, CONTACT SARAH LAGRONE, 620-221-5450. KANSAS STATE UNIVERSITY AGRICULTURAL EXPERIMENT STATION AND COOPERATIVE EXTENSION SERVICE K-STATE RESEARCH AND EXTENSION IS AN EQUAL OPPORTUNITY PROVIDER AND EMPLOYER.

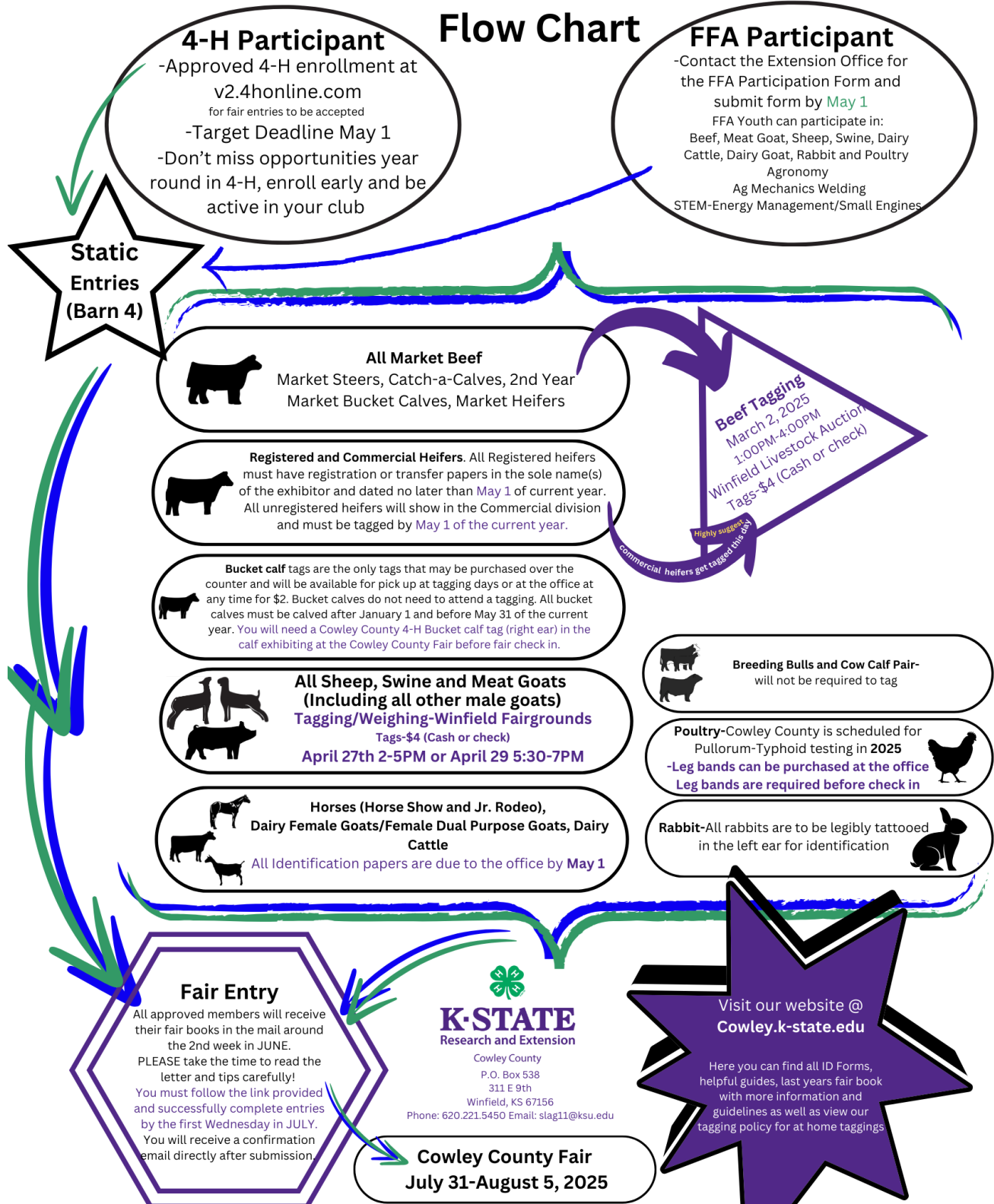
## Example of Livestock Destination Card

LIVESTOCK DESTINATION	
<b>DESTINATION</b> <b>(Check one)</b> <input type="checkbox"/> Home <input type="checkbox"/> Base <input type="checkbox"/> Locker Name _____ <input type="checkbox"/> Market Premium Sale (Terminal) <input type="checkbox"/> Market Premium Only Sale/Take Home <input type="checkbox"/> Market Premium Only Sale/ Meat is already Sold Meat Buyers Name _____ Meat Buyers Phone # _____ Locker Name _____	<div style="display: flex; justify-content: space-between; margin-bottom: 10px;"> <div style="text-align: right; font-size: small;">                     Exhibitor Club Tag ID Specie/Weight                 </div> <div style="border: 1px solid black; width: 100%; height: 60px; background-color: #f0f0f0;"></div> </div>
<b>Check to enter animal in Carcass Contest</b> _____	
Signature _____	Phone Number _____

If you have ANY questions about the Livestock Destination Card, please contact Sarah before the fair.

## Fair Flow Chart

### Cowley County Fair Youth Participation Flow Chart



## Cowley County Fair King & Queen

The Cowley County Fair King & Queen Contest is designed to bring to the attention of the general public the outstanding youth of our county, to promote youth development organizations involved with the fair and to promote the Cowley County Fair. Entry Deadline - **June 6, 2025**. All applications will be reviewed by the judging committee prior to the Cowley County Fair. Late applications will not be accepted.

### RULES:

1. Each Cowley County Fair Group, FFA Chapter or 4-H Club may nominate King and Queen candidates from their eligible membership.
2. All contestants must be nominees of one Cowley County organization named above.
3. All contestants must be exhibitors in the Cowley County Fair in the year nominated.
4. All contestants must be between 14 and 18 years of age before January 1 of the current year.
5. Contestants who have previously served as King or Queen will not be considered.
6. Contestants who have not served as King or Queen may re-enter the contest.
7. Final selection of King and Queen will be made by a combination of judges' scores and balloting by Cowley County Fair board members.
8. Candidates may not bring additional items, such as scrap books, photo albums, etc. into the interviews. Judges' selections will be based solely on the written application and personal interview.
9. All nominees must complete the King and Queen Entry Form and return to Cowley County Extension, 311 E 9th St. (P.O. Box 538), Winfield, 67156 by 5:00 p.m. on or before June 6.
10. Interviews will be announced when all forms have been collected.
11. Winners will be announced before the goat show of the Cowley County Fair.



**INTERVIEWS:** Face to face interviews will be conducted by three or more judges selected by the Cowley Fair Board King and Queen Committee. Date and location of the interview TBD. Face to face is defined as physically in the room with the judges. No additional materials may be brought to the interviews.

**SCORING:** Scoring will be done as follows:

1. Cowley County Fair Activities 30%
2. Club or Chapter Activities 15%
3. School, Church, Community Activities 10%
4. Poise and Personality 20%
5. Personal Appearance 10%

Click [HERE](#) for complete list of rules and entry form

### RESPONSIBILITY OF COWLEY FAIR QUEEN AND KING COURT:

1. Attend all Cowley County Fair shows and sales during the current fair. May be excused to attend functions to represent Cowley with approval of Cowley Fair King and Queen Committee or committee advisors.
2. Must be available to present awards to all Cowley Fair Shows, responsibilities being divided if one or the other is showing.
3. A schedule of time and places where attendance is required will be provided by the Cowley Fair King and Queen Committee. The King and Queen will be responsible for assigning all court members to Cowley County Fair shows and events. Court members will meet immediately following the coronation to review responsibilities.
4. The King and Queen shall represent Cowley County Fair.

**Market Livestock Sale****MARKET LIVESTOCK SALE**

Auction Clerk - Edw. B. Stephenson & Co., CPA

Monday, August 4, 2025 - 6:45 p.m. Cowley County Fairgrounds

1. The 4-H and FFA Market Livestock Sale will be for Market: Beef, Swine, Sheep, Goat and Rabbit Meat Pen only.
2. The sale order for 2025 will be: Meat Goat, Sheep, Beef, Meat Rabbit, Meat Bird and Swine
3. Animals sold through the sale must be exhibited at the Cowley County Fair.
4. Each 4-H and FFA exhibitor can participate in the Market Sale with one animal or rabbit meat pen only, and must exhibit their own animal in the sale ring. Exceptions may be considered for a substitute sale exhibitor with prior written approval prior to fair pre-entry deadline of a majority of the Market Livestock Sale Superintendents and the Cowley County Extension Agents for the following reasons: An official State or National 4-H/ FFA/Agricultural Industry event whereby the exhibitor is a documented officer or committee person.
5. The Market Livestock Sale Committee will announce a base bid on all species prior to the sale to be used only on all market animals sold through the Cowley County Fair. The base bid for all market animals will be subject to discounts for weight ranges according to industry standards. Discounts will be announced prior to the sale.
6. A charge of 3 percent of the total premium value only will be made for all animals. No commission will be charged on the base bid value of the animal. This fee is used to provide a special barbecue honoring buyers and other supporters of the Market Livestock Sale. It also covers advertisements, buyer's ribbons, and supplies.
7. All market livestock will be shown and sold based on official weight at fair weigh-in.
8. Each exhibitor must complete a "Livestock Destination" card for all livestock species eligible for the market livestock sale. This card must be turned in to the species superintendent by 2:00 p.m. on Saturday. There will be a 3% dock of premium money for cards which are turned in late or marked incorrectly.
9. All animals entering the sale ring that are not "take home" will be sold and must be picked up by a state inspected locker plant or to the base bid buyer.
10. Steers must be controlled without use of extra ropes or lariats.
11. 4-H/FFA members selling animals through the sale are expected to feed/water and care for them up until the time they are loaded on the truck or taken home.
12. To qualify for the auction, market animals' weight must fall within the following ranges. No shrinkage will be calculated on any animals.
  - Market steers/heifers- minimum of 1,050 pounds
  - Market hogs- 230-290 pounds
  - Market lambs- Minimum of 90 pounds
  - Meat Rabbit meat pen- 3-5 pounds each
  - Meat Bird pen of 3-3 pound Minimum each
  - Market goats- minimum of 50 pounds.
13. Starting in 2025 the Market Livestock Sale is not a mandatory terminal sale, individuals will have the option to select "premium only and take home" on their Livestock destination card. These animals will sell as premium only and animal will go home with the youth member.

## Horse Project

### What is a Coggins test?

'Coggins' is a common name for a blood test that is used to screen horses, mules and donkeys for a possibly fatal disease - Equine Infectious Anemia (EIA).

### What is Equine Infectious Anemia (EIA)?

EIA is an infectious, and potentially even deadly, virus that affects the immune system of animals in the equidae family. While some animals are able to carry the virus without showing symptoms, other horses will suffer from very severe symptoms of the disease including irregular heartbeats, swollen legs and abdomen, general weakness, anemia, a high fever and even sudden death. A herd outbreak of EIA can lead to catastrophic consequences which is why it is essential for horse owners to be diligent about testing for the disease.

### How can my horse catch EIA?

EIA is transmitted from one horse to another through mosquito bites, horse flies, deer flies or stable flies that have fed on a different infected animal. This means that your horse does not even need to have come into direct contact with an infected animal in order to contract this disease. Because flies are attracted to barns and other places that horses frequent, this extremely serious disease can be quickly and easily transmitted from one horse to another.

### Where/How is a Coggins test performed?

A veterinarian conducts a thorough exam of the horse and performs a blood draw. The blood is submitted to an accredited laboratory. Once the analysis is complete, the lab will forward the results either directly to the owner, and/or to your veterinarian. Some veterinary clinics use digital Coggins testing technology. This means that the results of the test will be visible online, but can be printed.

**Why is Coggins testing important and who should be testing?** EIA is highly contagious and fatal. Responsible horse owners should test annually, especially if horses will be comingled with other horses. An example of a Coggins certificate as well as additional information can be found here: <https://www.ksvhc.org/services/equine/field/coggins.html>

### What does Kelsey recommend for your local shows?

I recommend that local shows require proof of negative Coggins test within the last 12 months per the updated KDAH requirement. Here's an example of what the rule in your rulebook could be: "All exhibits in the 4-H Horse Show must present proof of negative Coggins test within the last 12 months at check-in." Local units may consider partnering with a local veterinarian to offer a Coggins and vaccination clinic. This updated requirement is not the result of an EIA outbreak in the state. I believe it is just implementing good biosecurity practices.

Kelsey Nordyke, M.S.  
4-H Ag Sciences Program Specialist  
Kansas 4-H Youth Development  
Mobile Phone (620) 222-1311



## Upcoming Events

We will be taking time to create a community service "Spotlight on Service" exhibit for the Cowley County Fair beginning with a committee report from each club's council representative at the **May council meeting** about their club's past service projects. This may be for the 2024-25 year or a previous year....pictures of events/club reports may be sent to Sarah ([slag11@ksu.edu](mailto:slag11@ksu.edu)). **Together ~ we make a difference for our clubs, our community, our county and our world!**



### 2025 GRAND HOUSE DRAWINGS

Each time a 4-Her participates in these events/programs, their name will be added to the drawing!

- YQCA Training
- Spring Shows
- Celebrate Ag
- Judging Contest and practices
- Livestock Programs
- Livestock Training Clinics
- Trips
- Livestock Record Book Submission

Drawing will be held at the 2025 Open House dinner October 18th

#### DRAWING INCLUDES CHOICES OF:

- LIVESTOCK SHOW BOX
- CLIPPERS
- CLIPPER BAG
- LIVESTOCK BLOWER
- AND MORE!

**K-STATE**  
Research and Extension

Kansas State University Agricultural Experiment Station and Cooperative Extension Service  
K-State Research and Extension is an equal opportunity provider and employer.



## September 5-14, 2025

2025 Kansas State Fair 4-H Exhibitor Handbook

[Cowley County 4-H](#)

[K-State Research and Extension - Cowley County](#)

[Cowley County Classic Beef Show](#)

[Cowley County Sheep and Meat Goat Show](#)

[Cowley County Goat Project](#)

[Cowley County Sheep Project](#)

[Cowley County Swine Project](#)

[Cowley County Horse Project](#)

[Cowley County Dog Project](#)

[Cowley County 4-H Sweepstakes Team](#)

[Cowley County Dairy Cattle](#)



Find us on:  
**facebook®**

## 2025 Livestock Production Essay

**Who can participate:** 4-H Members exhibiting livestock at the 2023 Cowley County Fair AND submitting a 4-H Project Report.

Participants exhibiting these species will be eligible:

- \* Beef
- \* Bucket Calf
- \* Dairy Cattle
- \* Swine
- \* Sheep
- \* Meat Goat
- \* Dairy Goat
- \* Meat Rabbits
- \* Production Poultry



**Due**  
**September 19, 2025**  
**Both 4-H Project Report and Essay**

Potential topics to build on:

- \* **Production-** Breeding animals, what are your future goals? What specific details do you need to consider if you plan to keep this animal and breed them?
- \* **Finances-** pasture stocking rate, available pasture/rental rates, price to feed, maintain, breed, house this animal?
- \* **Marketing-** Marketing to sell this animal or their progeny for a return on investment.
  - Break down your plan
- \* **Industry Expectations-** interview Bankers, FSA Loan Officers, Extension Agents, Local Farm/Ranchers, study and cite University publications.
- \* **Goal Setting-** does your animal have products to sell? (milk/eggs/offspring) What does your business plan look like for that and how are you going to make that work and grow to be a profitable business owner?
  - Do you have a market animal? How are you feeding that animal to be the most profitable on the rail? Are you marketing that animal before the fair to get the best price? Do you know how much meat that animal provided after the fair? What is your goal as you feed this animal and how did you do? Hanging weight, back fat, pounds of product.

If you need help with this project, please schedule an appointment with Sarah to help you explore ideas.

The intent of this essay is to dig deeper into the production side of the industry, learning from publications and professionals in our area. You will want to plan to have it proofed by multiple people.

## 4-H Club Corner

### A 4-H Project: More than a Fair Entry

### Kansas 4-H Learning Pathway

### 4-H Meeting Wheel

Just click on the link to see helpful resources. The 4-H Club Corner has many more resources available on Kansas 4-H webpage:  
**4-H Club Corner**

## Kansas Clover Classroom

### Dynamic Displays

### Pollinators

### Take A Hike!

Many more resources available on the [Clover Classroom page](#).

## 4-H AMBASSADORS

#### **PURPOSE:**

WORK TOGETHER WITH A TEAM OF APPROXIMATELY 3-8 AMBASSADORS AND AN ADULT ADVISOR TO DEVELOP A PUBLIC INFORMATION PROGRAM FOR THE COWLEY COUNTY 4-H PROGRAM.

#### **RESPONSIBILITIES:**

PROMOTE 4-H TO ALL AUDIENCES  
ORGANIZE 4-H PROMOTIONAL EVENTS AND ACTIVITIES  
DEVELOP COMMUNICATION SKILLS

#### **QUALIFICATIONS:**

HIGH SCHOOL FRESHMAN TO AGE 18  
ENTHUSIASM FOR 4-H  
INTEREST IN PROMOTING THE 4-H PROGRAM

#### **TIME REQUIRED:**

1 OR 2 YEAR TERM  
4-8 HOURS PER MONTH

THROUGH THIS EXPERIENCE, 4-H AMBASSADORS WILL HAVE OPPORTUNITIES TO LEARN, PRACTICE AND IMPROVE COMMUNICATION, MARKETING, EMPLOYABILITY AND JOB SKILLS.

## APPLY NOW!

**CLICK HERE!**  
**to apply for**  
**4-H**  
**Ambassadors**

## Shooting Sports

**Club Meeting** - NO May Meeting - Happy Memorial Day/Summer Break!  
Next club meeting, Monday, Aug. 25th.

**Air Discipline-** (BB, Air Pistol, Air Rifle) Season Closed, next practice  
Sunday, Nov. 2, 2025.

**Archery-** NO PRACTICE MAY 1ST...Thursdays weekly, Gate opens at 6:00 pm at the Meadow. Special  
Fun Shoot, Thursday, May 29th.

**Shotgun-** 3rd Sunday, May 18th 2:00 at the meadow - weather permitting.\*\*Must email for a relay time  
for member to be on the practice line.

**Muzzleloader/Small Bore** - Tuesdays, June-July - Watch for emails for more details.

**Congratulations** to the 2024 Kansas State Sportfishing Anglers of the Year, Cowley members Hunter  
Bishop, winner of the Largemouth Black Bass and Sebastian Donham, participant in the Catfish category;  
who showcased their entries at the Shooting Sports Fair booth and received their awards at our Cowley  
4-H Achievement Night in November.

NOTE: Remember to enroll in the Wildlife project for Sportfishing. The June Newsletter will have details  
for the 2025 "Cowley 4-H Sportfishing Slam" opportunity at the Shooting Sports fair booth. Get those  
poles ready for summer fishing days!"

**Austin Waite**

**Cowley County 4-H Shooting Sports Coordinator**

620-222-1982

P.O. Box 422

Winfield, KS 67156

[www.4hshootingsportscowleyks.com](http://www.4hshootingsportscowleyks.com)

<https://www.facebook.com/cowleycounty4hshootingsports>



**Fishing Opportunity- Registration Deadline May 8****SATURDAY, MAY 10****WINFIELD CITY LAKE, ZONE 2****BASS TOURNAMENT****\$150 PER TEAM (2 ANGLERS/TEAM)**

6am - 2pm

Payouts: 1st - \$500 | 2nd - \$300 | 3rd - Prize Package

**SIDE POT:  
BIGGEST FISH**

\$25 entry

Winner takes half

**BBQ CONTEST****\$150 PER TEAM  
(+\$50 PER ADDITIONAL ENTRY)**

11:30am - 1pm

Payout based on entries

**KIDS' FISHING DERBY****\$15 PER CHILD (12 & UNDER)**

Open 6am - 11am (come &amp; go)

Prizes: 1st - \$30 | 2nd - \$25 | 3rd - \$20

**REGISTRATION**  
**RULES + SCHEDULE + INFO****WNHCARES.ORG/BASSNBBQ****REGISTRATION ENDS MAY 8  
NO DAY-OF REGISTRATION****REGISTER BY  
APRIL 23 TO  
GUARANTEE  
YOUR SHIRT  
ON EVENT  
DAY.****BENEFITING:****WN**  
William Newton  
AUXILIARY**EVENT  
PARTNER:****CITY OF  
WINFIELD**  
  
**KANSAS**

## Kansas 4-H Sportfishing

### KANSAS 4-H SPORTFISHING TOURNAMENT

2025

The Kansas 4-H Sportfishing Tournament is open to all 4-H members. The contest runs throughout the year and ends September 15, 2025. Anglers can fish year-round but entries must be in by the deadline, fish caught after the deadline may be entered in the next contest. Participants can enter in any species/categories that they catch fish – go fishing and have fun!!!

One 4-H Angler of the Year will be named in each of the species/category listed below. These are fish commonly found in Kansas waters. Each Angler of the Year will receive a frameable certificate and a Wal-Mart gift card to hopefully be used for fishing equipment (one per individual). All participants that enter a certified entry will also receive Wal-Mart a gift card.

The following species will make up the contest:

Specie/Category

Catfish (Channel, Flathead, or Blue Cat)

Sunfish (Bluegill, Green Sunfish, Hybrid Sunfish)

Crappie (Black or White)

Black Bass (Largemouth or Smallmouth)

Any Rough Fish (Carp, Drum, Buffalo, Grass Carp)

Other Game Fish (Walleye, Saugeye, White Bass, Wiper, Striper, Trout)

Minimum length for entry

15"

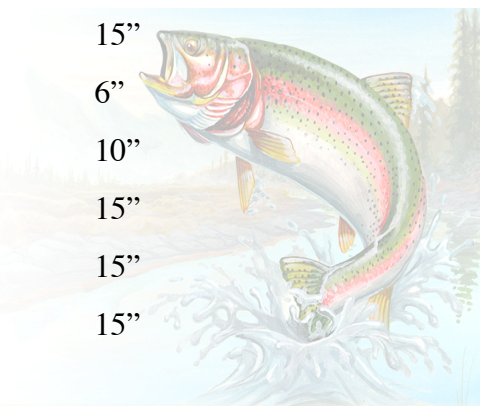
6"

10"

15"

15"

15"



#### RULES:

1. Must be enrolled in 4-H but do not have to be in the Sportfishing Project.
2. To compete for Angler of the Year Award the entry must also be weighed and witnessed (digital hand scale is acceptable, no spring scales please.) Only one Angler of the Year award per individual will be awarded. If a participant is selected as first in a species/category their additional entries will not be considered in subsequent classes. We want to recognize as many participants as possible. Please use the **2025 entry form** but will accept other year forms if necessary.
3. Fish must be caught by a legal method as outlined in the current Kansas Department of Wildlife and Parks Fishing Regulations Summary. Fish can be caught anywhere in the state of Kansas.
4. **YOUNG ANGLERS MUST CATCH THEIR OWN FISH!** The past few years some very small/young anglers have caught some very big fish that would have required significant assistance from an adult. PLEASE PARENTS OR OTHER ADULTS, LET THE KIDS CATCH THEIR OWN FISH ALTHOUGH SOME HELP MAY BE REQUIRED.
5. Entries must be postmarked by September 15th or e-mailed/texted by that date. Winners will be announced around October 1, 2025. Every effort will be made to have the awards available to the counties/districts by their achievement awards program for presentation there or sent directly to the winners. I'll contact the county/district agent for their preference.
6. Entries are to be submitted to Tommie Berger 406 S. New York Ave. Sylvan Grove, KS 67481.  
bergkwf@wtciweb.com 785-524-6112

**Kansas Youth Range Camp**

Are YOU interested in plants, livestock or wildlife?



# KANSAS YOUTH RANGE CAMP

White Memorial Camp, Council Grove, KS

Upcoming High School Sophomores, Juniors, & Seniors

Learn about range plant identification, plant growth, stocking rates, livestock nutrition, and rangeland wildlife management

Enjoy field trips, hands on learning, a steak dinner, swimming, fishing, and hiking!



June 10-13, 2025

COST: \$300

Contact your local Conservation District for scholarship opportunities!



**Educating Kansas**



**Youth for**



**Over 60 years!**

**REGISTER NOW**

Sponsored by:  
Kansas Section,  
Society for Range  
Management



Contact:  
Courtney Jackson  
KS Youth Range Camp Chair  
620-767-5111 ext. 3  
courtney.jackson@usda.gov

[www.kgic.org/range-youth-camp-registration.cfm](http://www.kgic.org/range-youth-camp-registration.cfm)

## Cowley County 4-H Enrollment

✿ [4-H Online Enrollment Link](#)

✿ [Cowley County KSRE Website with 4-H Enrollment Information](#)

The 4-H year runs Oct. 1st. to Sept 30. **ALL YOUTH and ADULT VOLUNTEERS** participating in the 2024-2025 4-H year should enroll.

In order to be a regular member of Cowley County 4-H, the member must be 7 years old before January 1, 2025.

[Cloverbuds](#) is for children ages 5-6 before January 1, 2025.

[Project Selection Guide](#) (includes descriptions of all projects)

[Setting 4-H Project Goals](#)

[4-H Project Record Books](#)

[ZBooks](#) (online record keeping option)

Click [here](#) to sign up for a County Committee

### DID YOU KNOW??

The [Kansas Clover Classroom](#) is packed with helpful project information

## Financial Help

### Get Financial Help Attending Events

The Cowley County 4-H Development Fund is our local 4-H foundation created in 1995 to assist Cowley County 4-H'ers take part in educational events and activities. Funding is provided by gifts from supporters. Each year, the 4-H Development Fund awards college scholarships to high school seniors and college freshmen. Beginning in 2015, the Development Fund introduced "Leadership Development Grants". Leadership Development Grants are available by application to local 4-H members who are registered for a state or national leadership event such as Discovery Days, National 4-H Congress, Kansas Youth Leadership Forum, Citizenship Washington Focus and more. Applications are available on our website [cowley.k-state.edu](http://cowley.k-state.edu). Applicants must submit an essay, write a thank you note to a Development Fund donor and present a program about their experience to a 4-H club or county-wide group following attendance at the event. For more information, contact Sarah at [slag11@ksu.edu](mailto:slag11@ksu.edu) or 620-221-5450.

### Foster Care Resource Family Project and Camp Grant Programs

The purpose of the Kansas 4-H Resource Family Project and Camp Grant Programs is to provide financial assistance for foster youth and their resource families who want to participate in learning opportunities available through 4-H. Thanks to generous donors, the Kansas 4-H Foundation has funds available to support Kansas resource families and the children in their care who are current members or interested in becoming members of 4-H. Find more information [here](#).

## **Cowley County Extension Office**

Contact us:

[cl@listserv.ksu.edu](mailto:cl@listserv.ksu.edu) (620) 221-5450 or (620) 441-4565

Sarah LaGrone, 4-H Youth Development, [slag11@ksu.edu](mailto:slag11@ksu.edu)

Becky Reid, Family & Consumer Sciences, [bkreid@ksu.edu](mailto:bkreid@ksu.edu)

Jeff Seiler, Ag & Natural Resources, [jseiler4@ksu.edu](mailto:jseiler4@ksu.edu)

Cindy Stephens, Office Professional, [cstephens@ksu.edu](mailto:cstephens@ksu.edu)

**K-STATE**  
Research and Extension



Office Hours  
Monday through Friday  
8-11:30 a.m.  
and  
12:30 - 5 p.m.

## **Cowley County Extension Council Executive Board**

The Cowley County Extension Council Executive Board meets monthly and conducts the business of the Extension Office. The Extension Council monthly meeting will be held on Thursday, May 1, 2025 at 5:30 p.m. in the Assembly Room at the Cowley County Courthouse.

## **Friends of Extension**

As someone who contributes time, talent and/or treasure to the benefit of Cowley County Extension, you are invited to be part of the Friends of Cowley County Extension organization. The group will alternate between morning and evening meetings to plan fundraising and advocacy events to support K-State Research and Extension Cowley County.

## **4-H Development Fund**

Did you know? Tax deductible contributions can be made to the 4-H Development Fund (c/o PO Box 538, Winfield KS 67156) or to the Friends of Cowley County Extension Endowment (c/o Legacy Regional Community Foundation, 1216 Main Street, Winfield KS 67156)

## **Legal Stuff**

K-State Research and Extension is committed to providing equal opportunity for participation in all programs, services and activities. Program information may be available in languages other than English. Reasonable accommodations for persons with disabilities, including alternative means of communication (e.g., Braille, large print, audio tape, and American Sign Language) may be requested by contacting the event contact Sarah LaGrone two weeks prior to the start of the event at 620-221-5450. Requests received after this date will be honored when it is feasible to do so. Language access services, such as interpretation or translation of vital information, will be provided free of charge to limited English proficient individuals upon request. Kansas State University Agricultural Experiment Station and Cooperative Extension Service K-State Research and Extension is an equal opportunity provider and employer.